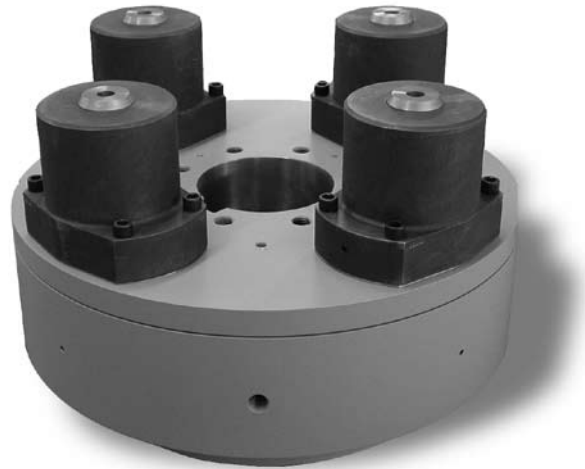


Brunel Safety Element Torque Limiters

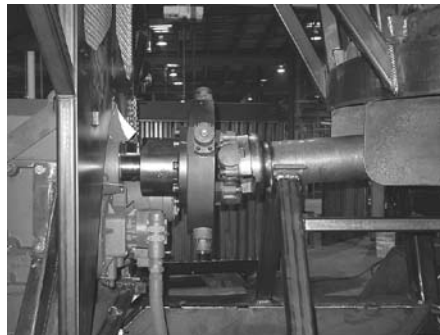
Applications

540 - 1000 hp, 820 - 1155 rpm horizontal grinder Torque Limiter, engine with PTO drives through multiple belt sheave to driven sheave that houses application specified Brunel Torque Limiter mounted directly on mill shaft. When the Torque Limiter releases, it disconnects all the inertias of the engine, belts and sheaves from adding damage to the mill.

**Wood Hog
(Hammermill Grinder) Torque Limiter**



Wood Hog in Service



Tub Grinder — Wood Grinder
Torque Limiter located between PTO output shaft and u-joint driving hammermill.
Morbark 1300 - 1600 Tub Grinder
1000 - 1200 hp
1050 - 1200 rpm
226,750 - 272,100 lb. in.



Wood Hog — Torque Limiter
Torque Limiter located in driven sheave on mill shaft.
Morbark 2600 - 7600 Wood Hogs
200 - 1200 hp
47,000 - 277,000 lb. in.