

Brunel Safety Element Torque Limiters

General Engineering Data

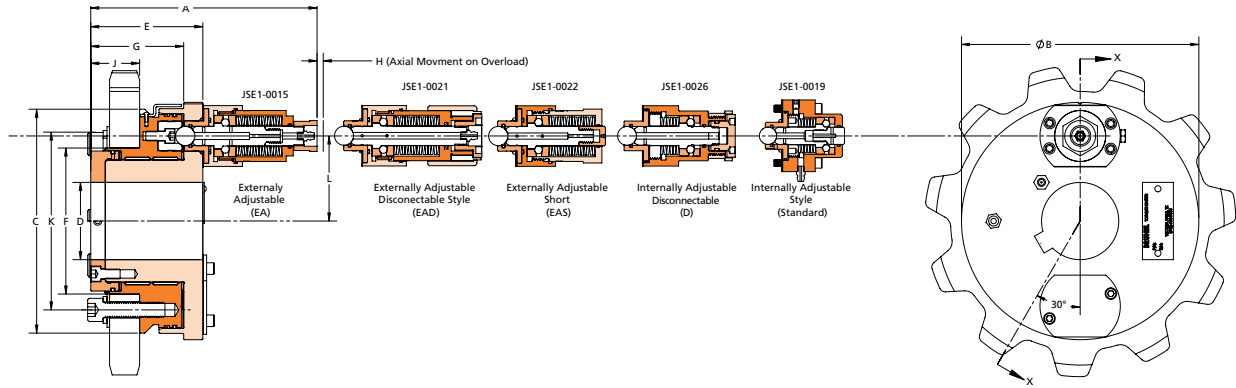
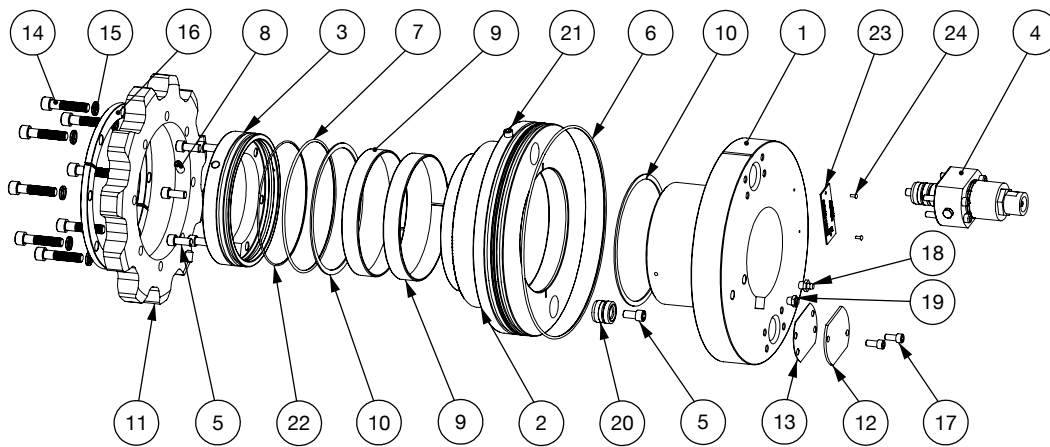


Chart 1

Brunel Part No. Series	Safety Element Qty.	Externally Adjustable Torque Range lb in	Internally Adjustable Torque Range lb in	Safety Element Style	Dimensions in inches											Min H78 Sprocket															
					A	B	C	D max.	E	F	G	H	J	K	L		M														
JSE1-0100	1 2	1,604 - 7,356 3,208 - 14,712	1,105 - 9,044 2,210 - 18,086	EA	7.32								.211																		
				EAD	7.57																						Qty 6	9			
				EAS	6.54	6.10	5.66	1.750	3.62	3.64	3.00	.211	1.58	4.50	1.925	3/8 - 16													Tooth		
				D	6.72											.162															
				Standard	5.84											.162															
JSE1-0150	1	2,024 - 9,287	1,395 - 11,415	EA	7.29								.211																		
				EAD	7.46																							Qty 6	11		
				EAS	6.42	7.00	7.00	2.50	3.50	4.72		.211	1.94	5.75	2.425	1/2 - 13													Tooth		
				D	6.60											.162															
				Standard	5.80											.162															
JSE1-0200	1 2	2,291 - 10,510 4,582 - 21,021	1,579 - 12,920 3,157 - 25,840	EA	7.32								.211																		
				EAD	7.56																								Qty 6	11	
				EAS	6.54	7.68	7.25	2.938	3.62	4.724	3.00	.211	1.58	5.75	2.75	1/2 - 13														Tooth	
				D	6.72											.162															
				Standard	5.84											.162															
JSE1-0400	1 2 3 4	3,107 - 14,256 6,214 - 28,512 9,321 - 42,768 12,428 - 57,023	2,141 - 17,523 4,282 - 35,047 6,423 - 52,570 8,564 - 70,093	EA	8.90								.211																		
				EAD	7.56																									Qty 8	11
				EAS	8.02	9.75	7.25	3.75	5.10	6.00	3.00	.211	1.58	6.60	3.83	3/8 - 16														Tooth	
				D	8.20											.162															
				Standard	7.42											.162															



400 Series Exploded View P/N: JSE1-0401EA

Chart 2

Item	Description	Qty.	Item	Description	Qty.	Item	Description	Qty.
1	Module Carrier Hub	1	9	PTFE Bearing	2	17	Blanking Plate Bolts	2
2	Detent Pocket Plate	1	10	PTFE Thrust ring	2	18	Grease Zerk	1
3	Retaining Plate	1	11	Sprocket	1	19	Grease Relief Valve	1
4	JSE1-0015 EA SE	1	12	Blanking Plate	1	20	JSE1 Detent	1
5	Retaining Plate Bolts	6	13	Blanking Plate Seal	1	21	Alignment Bolt	1
6	O-ring Seal	1	14	Sprocket Bolts (SHCS)	8	22	O-ring Seal	1
7	O-ring Seal	1	15	Sprocket Lock Washers	8	23	Name Plate	1
8	Socket Set Screw	2	16	Split Clamping Ring	2	24	Rivets	2

Consult factory for special application